



STATE-OF-THE-ART
PATIENT CARE



OUTSTANDING CUSTOMER
SERVICE



DEDICATION TO OUR
COMMUNITIES



FINANCIAL HEALTH
AND RESPONSIBILITY

NOW ACCEPTING APPLICATIONS

Lakes Region EMS is currently taking applications for qualified, highly motivated and energetic people with a strong commitment to outstanding customer service, state-of-the-art patient care, dedication to the communities we serve and financial health and responsibility. Our competitive salaries are based on years of experience and we offer some of the most flexible scheduling in the metro and out-state regions.

LREMS BENEFITS

- Competitive Pay
- Flexible Schedule
- 12-24 Hour Shifts
- 36/36 Pay Period
- Progressive Guidelines
- Paid Uniforms
- Medic/EMT Schedule
- Critical Care Education
- Conference Reimbursement
- Tuition Reimbursement
- Health Club Sponsorship
- 401K, Health, Dental
- Long /Short Term Disability
- Pay for Performance

Lakes Region



Apply Now!

WWW.LREMS.COM

Serving the citizens of Chisago County with state of the the art patient care, outstanding customer service, dedication to the communities we serve and financial health and responsibility.



COMPANY OVERVIEW

Lakes Region EMS is a private, not for profit ambulance service located sixty minutes north of the Minneapolis/St. Paul area. Our primary service area encompasses 450 square miles of rural/suburban Minnesota with a population of 45,000 persons. Our staff members responded to 4,063 calls and donated over 200 hours of informal education, ambulance tours and medical stand bys in 2010.

We have three stations throughout Chisago county from which we provide 24 hour 911 Advanced Life Support (ALS) services and Critical Care, ALS, and Basic Life Support (BLS) interfacility transports for eight surrounding hospitals and five neighboring ambulance services.

In addition to Emergency Medical Services, we provide community and public safety education. We currently provide the training for all of our First Responder services, including local volunteer Fire Departments, our municipal Police Departments, and the Chisago County Sheriff's Office.

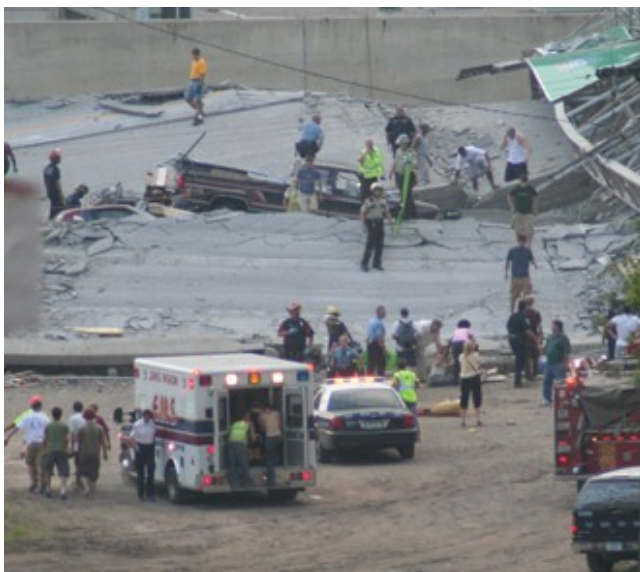
STATE OF THE ART PATIENT CARE

All of our ambulances are staffed and equipped to provide Advance Life Support (ALS) care. LREMS uses the latest in technology and treatments including Drive Cam, Toughbooks (Electronic PCR), CPAP, Pro-Vent ventilators, EZ-IO, Res-Q-Pod, Zoll E-series 12 lead cardiac monitors with ETCO2, NIBP, SPO2, and Bluetooth technology. We have some of the most progressive protocols in the state that encourages our staff to work as clinicians, not technicians.

State of the art patient care rose to a new level in 2009. The organization continued its focus on expanding our patient care abilities both in prehospital care as well as interfacility critical care. Using computer driven manikin simulation, Paramedics and EMTs are able to regularly practice extremely difficult patient care scenarios to build confidence and maintain low volume, high risk skills. Without this technology, some patient care scenarios might rarely be seen by clinicians. The combination of clinician based knowledge learning and technology driven simulation has allowed Lakes Region EMS clinical staff to rise to a new level of excellence.

DISASTER RESPONSE

Lakes Region is proud to offer the only immediately available fast track triage trailer in Chisago and surrounding counties. Once deployed, the trailer will provide generator power, lighting, trauma and fluid resuscitation supplies for approximately 50 patients, as well as EMS branch command supplies for extended operations. Lakes Region EMS has responded to both local and national disasters including deployment to Hurricane Rita in 2005, the I-35W bridge collapse, the Hugo Tornado, and the Fargo/ Moorhead flooding in 2009. Lakes Region EMS continues to be included in the national response call list for future disasters and will be available to respond again for extended



CONTACT INFORMATION

All interested applicants must fill out the online application @ www.lrems.com

Aarron Reinert
Executive Director
(651) 277-4911 #104
Aarronr@lrems.com

Ben Wasmund
Director of Operations
(651) 277-4911 #112
Benw@lrems.com

PROFESIONAL/COMMUNITY EDUCATION



In 2010, Lakes Region EMS provided over 200 hours of medical standby's, informal education, ambulance tours and open houses. Our crews participated in the Chisago County Fair, local area festivals, numerous parades, sporting events and school programs. These services, donated by LREMS, provide the community with an opportunity to meet our EMS professionals, gain an understanding of our role in the area and learn about the medical services we provide. In 2005, we launched a community based initiative to support, fund, train and place public access defibrillators through out Chisago County. We continue to offer training and support to over 39 community based AED's.

TACTICAL EMS



In June of 2007, Lakes Region EMS was proud to add a Tactical EMS (TEMS) component to their services and joined efforts with the Chisago County Sheriff Office SWAT team to provide Tactical Medical support. Five Lakes Region EMS employees have been trained and outfitted to respond in conjunction with all SWAT team callouts and trainings. After being selected for the team, each member is required to attend an initial 68 hour comprehensive tactical training course at Camp Ripley, as well as attending an additional 10 hours of training each month with the CCSO SWAT Team.